



**VISION**

# CATALOG

Scan and View  
Factory Video



*"High Quality, Excellent  
Service and High Efficiency"*

- ◆ DTF Printing
- ◆ Heat Transfer Paper
- ◆ Sublimation Paper
- ◆ OBM Sublitextile
- ◆ Heat Transfer Vinyl

# 2023 EXHIBITION SCHEDULE YESIONGROUP



Booth No.:3021  
12-14 April,2023  
Las Vegas



Booth No.:H050  
12-15 July,2023  
São Paulo - Brazil



Booth No.:5G-G42  
19-22 April,2023  
Hong Kong



Booth No.:3005  
12-14 October,2023  
Zhuhai



Booth No.:B1-A53  
23-26 May,2023  
Messe München



Booth No.:B15108  
18-20, October, 2023  
Atlanta, GA



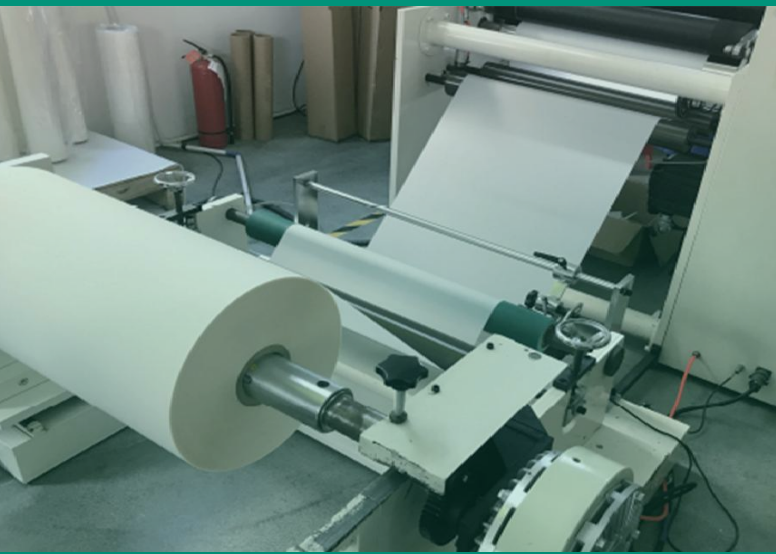
Booth No.:B1401  
18-21 June,2023  
Shanghai

# DTF FILM | CHINA FACTORY

SHANGHAI YESION  
is your Top 1 supplier for DTF film.



Scan and View  
Factory Video



## Shanghai Yesion Industrial Co., Ltd.

Was established in 2008, specializing in the production and development of DTF film.

The factory covers an area of 10,000 square meters, and the production capacity can reach 60,000 square meters per day. Shanghai Yesion is your Top 1 supplier for dtf film. Now we have developed a variety of special types of DTF film.

## Our DTF film Advantage:



Touch soft



Durable wash



Easy to identify



Easy to peel

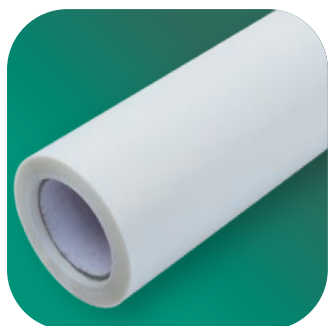
## And we can provide one-stop purchasing solution

Including: DTF ink/DTF powder/  
DTF printer/ DTF shaking powder  
machine

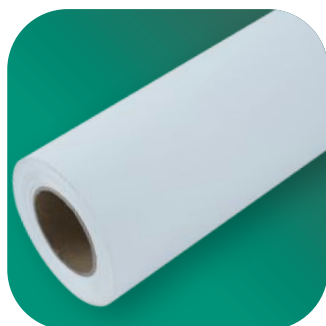


And we are still constantly researching new products.

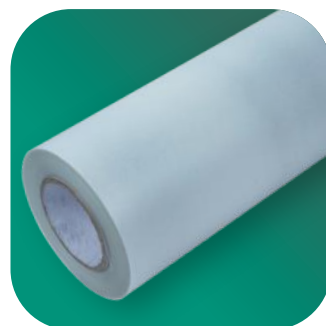
DTF (Direct to Film) film can be applied to various types of fabrics to create vibrant and durable designs. Some of the commonly used fabrics for DTF transfer film applications include: Cotton/Polyester/Blends/Nylon/Spandex/Lycra/Denim etc.



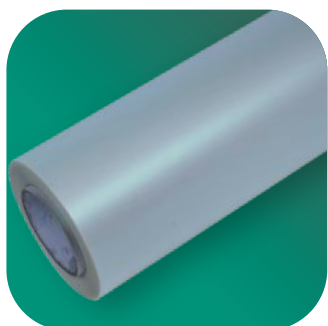
DTF film



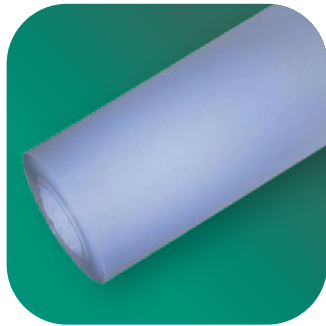
DTF paper



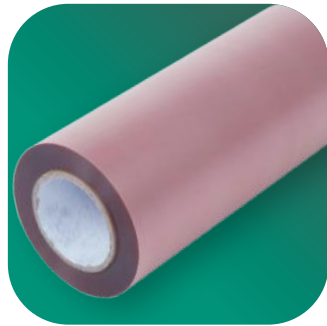
DTF film diamond



DTF film brilliant



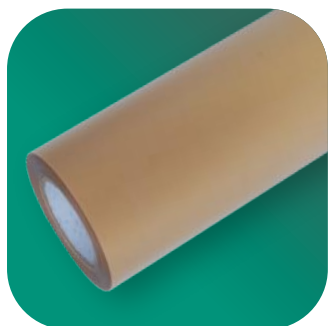
DTF film holographic



DTF film gradient



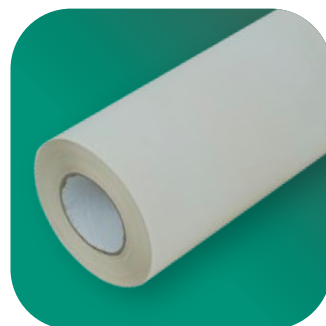
DTF film glitter gold



DTF film dark gold



DTF film glow in dark



DTF film rainbow reflective

- **DTF film**
- **Size:A3/A4**  
**30cm/60cm×100m**



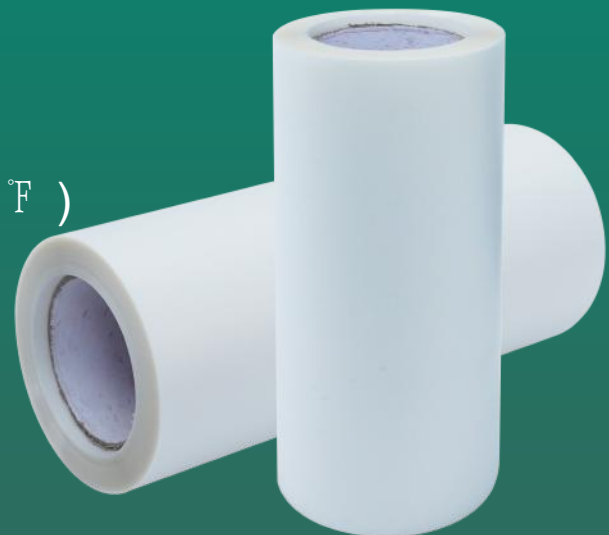
Sheet Size : A4(210mm\*297mm)  
 A3(297mmx420mm)/A3+(330mm\*483mm)  
 Thickness : 0.08mm  
 Type : single matte/double matte  
 Transfer Temperature : 165 °C ( 329 °F )  
 Transfer Time : 10-15S  
 Peel : hot or warm



Scan Or Touch To View Video



Roll Size : 30cm/60cm\*100m  
 Thickness : 0.08mm  
 Type : single matte/double matte  
 Transfer Temperature : 165 °C ( 329 °F )  
 Transfer Time : 10-15S  
 Peel : hot or warm



Scan Or Touch To View Video

- **DTF ink**
- **DTF powder**



# DTF ink

Ink Color:C/M/Y/K/W

Compatible Print Heads:Epson I3200/4720  
5113/DX5/DX7

Compatible Printer Models:Epson Printers  
(wide format, desktop),Chinese Printers  
(Hansen,Boyuan Hengxin mainboard)

Compatible material: most DTF film in the market  
Package:1L/100ML

Recommended store environment: Temperature 5-30°C,  
humidity 40%-85%

Warranty:Color ink: 1 year, white ink: 6 months



# DTF powder



Particle diameter:90-200µm

Melt index: 30±5g/10min

Density: 1.02±0.02 G/cm

Melting point: 95-100°C

Packing: 1kg/5kg/25kg/bag

Color: white/black

Form: Powder

Validity period: 1 year



**white**



**black**

- DTF printer
- DTF shaking powder machine



# DTF printer (60cm)



**Model : ME-650DHT**

**Print Head : Daul I3200 Print Head**

**Printing Technology : Piezoelectric Inkjet**

**Printing Width : 600 mm**

**Acceptable Media :** Width/650 mm  
Thickness/1mm  
Weight/8kg (60cm\*100m)

**Ink Cartridges :** Type/DTF ink  
Color/5 Colors (Cyan, Magenta, Yellow, Black, White)

**Ink Cartridges :** Capacity/1.5L Ink Tank with alarm function+ secondary continuous ink supply system+White ink agitate and circulation

**Printing Resolution : 3600dpi**

**Printing Speed :** 4 pass-20m<sup>2</sup>/h  
6 pass-12m<sup>2</sup>/h

# DTF shaking powder machine

**Model : ME-650DHT**

**Acceptable media width : 0-600MM**

**Heating function :** Infrared carbon fiber heating tube

**Rewinding function :** Automatic induction rewinding

**Voltage : 220v**

**Rated current : 18A**

**Rated power : 4WK**

**Machine size : 1700\*830\*1100MM**

**Packing size : 1222\*880\*1140MM**

**Net weight : 100KG**

**Gross weight : 150KG**



# INKJET HEAT TRANSFER PAPER



## INKJET HEAT TRANSFER PAPER



Scan Or Touch To View Video

OEM Service: Can provide customized back printings

	Inkjet Dark Heat Transfer Paper	Inkjet Light Heat Transfer Paper
Size	Sheet: A4/A3 Roll: 1.05x30/50m	Sheet: A4/A3 Roll: 1.05x30/50m
Suitable Materials	Dark colored 100% cotton or polyester cotton blend fabric	Light colored 100% cotton or polyester cotton blend fabric
Printer	For all inkjet printer	For all inkjet printer
Ink	Pigment ink(recommended)	Pigment ink(recommended)
Print Mode	Common paper, high quality photo	Common paper, high quality photo, mirror print mode
Temperature	165°C(160-180°C)	185°C(180-190°C)
Time	15s (7-15s)	25s (15-25s)
Peel type	-	Hot peel



# LUMINOUS DARK TRANSFER PAPER

## LUMINOUS DARK TRANSFER PAPER



Scan Or Touch To View Video

Size	Sheet: A4/A3	Roll: 1.05*30/50m
Suitable Material	Dark colored 100% cotton or polyester cotton blend fabric	
Printer	For all inkjet printer	
Print Mode	Plain Paper, High Quality	
Ink	Pigment ink (Recommended)	
Temperature	165°C	
Time	15s	
Peel Type	-	
Feature	Glow in the dark	

## Features :

1. After exposure to light absorption for 20 minutes or more, the printing image part of the garment will glow green in the dark
2. The Paper is compatible with all Inkjet printers

## Notes :

1. Simple patterns can be cut with scissors.
2. Complex patterns are recommended to use a cutting plotter



In the dark

# GLITTER DARK TRANSFER PAPER



## GLITTER DARK TRANSFER PAPER

Size	Sheet: A4/A3	Roll: 1.05*30/50m
Suitable Material	Dark colored 100% cotton or polyester cotton blend fabric	
Printer	For all inkjet printer	
Print Mode	Plain Paper, High Quality	
Ink	Pigment ink (Recommended)	
Temperature	165°C	
Time	15s	
Peel Type	-	
Feature	Reflect colorful shimmer	



Scan Or Touch To View Video

## Features :

The tiny glittery bits will glitter and shine through your image. Wait 24 Hours before washing the garment. After washing, the glitter effect will be more obvious.

## Notes :

1. Simple patterns can be cut with scissors.
2. Complex patterns are recommended to use a cutting plotter.

# IRON-ON TRANSFER PAPER



Size	Sheet: A4/A3	Roll: 1.05*30/50m
Suitable Material	Light colored 100% cotton or polyester cotton blend fabric	
Printer	For all inkjet printer	
Ink	Pigment ink (Recommended)	
Print Mode	Plain Paper, High Quality, Mirror printing mode	
Temperature	Cotton and Linen gear without steam	
Time	120s (60s-120s)	
Peel Type	Hot peel / Cold peel	

For use on: Light-colored T-shirts, aprons, gift bags, mouse pads and other light-colored 100% cotton fiber material.



## SUB-LIGHT NO-CUT TRANSFER PAPER

This paper is designed for transferring light-colored cotton fabrics using inkjet printer with sublimation ink. Without Cutting and without Weeding!

Apply	White and light-colored cotton fabric
Printer	Inkjet printer with <i>sublimation ink</i> , like Epson
Size	Sheet: A4/A3 Roll: 1.05m x 30m / 50m / 100m
Transfer condition	Temperature: 185°C Time: 15s-30s ※ Pressure: Heavy Peel: Hot
Machine	Recommended using swing away heat press machine



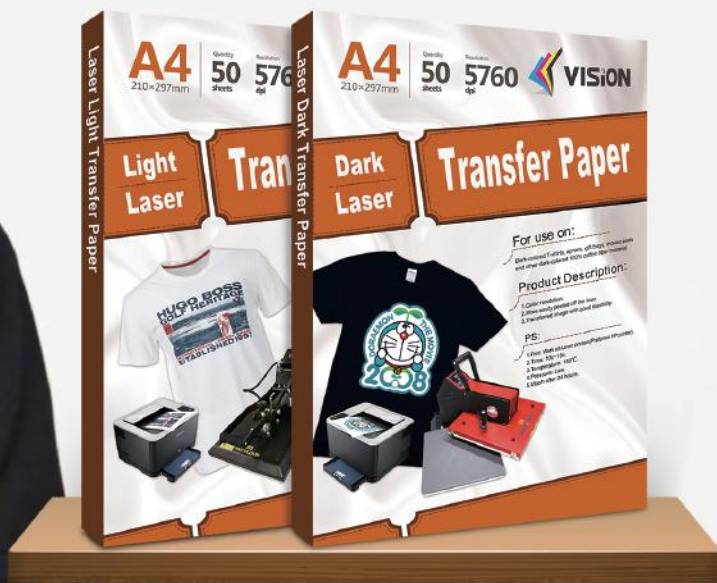
# LASER HEAT TRANSFER PAPER



## LASER HEAT TRANSFER PAPER



Scan Or Touch To View Video



	Laser Dark Heat Transfer Paper	Laser Light Heat Transfer Paper
Size	Sheet: A4/A3 Roll: 1.05x30/50m	Sheet: A4/A3 Roll: 1.05x30/50m
Suitable Materials	Dark colored 100% cotton or polyester cotton blend fabric	Light colored 100% cotton or polyester cotton blend fabric
Printer	HP laser color printer (recommended)	HP laser color printer (recommended)
Print Mode	Label paper	Mirror print mode, label paper
Temperature	140°C(140-150°C)	185°C(180-190°C)
Time	15s (7-15s)	25s (25-15s)
Peel type	-	Hot peel

## SELF-WEEDING TRANSFER PAPER



Scan Or Touch To View Video

## SELF- WEEDING TRANSFER PAPER



Laser Dark (No Cut) is a self weeding two paper system to produce vibrant prints with no residue in the unprinted areas. Allowing you to print full color, high street quality results onto a vast array of textiles and materials such as: Cotton, Polyester, Poly-cotton, Nylon (T-Shirts, Polo Shirts, Caps, Towels etc) and also Paper/Carton etc.

Size	A4/A3
Printer	Laser printer with white toner, such as OKI C711WT(A4) / C941DN(A3)
Usage	Use for black colored cotton fabric
Wash fastness	Over 20 times
Transfer condition	Step 1 from B to A ☑ : 160-170°C ⌚ : 60-90s (hot peel on the flat) Step 2 transfer T-shirt ☑ : 160-170°C ⌚ : 15s (warm or cold peel)



### \*Notice:

1. We have cut B paper (gray back labels) into smaller compared to the full-scale. That is when you put B onto A paper, you still can see A paper circles.
2. Tear off B paper without leaving the hot plate! Hot tear!
3. After you take the T-shirt off the ironing board and leave it for cooling 10-15s, you can tear off A paper.
4. After transferring, you still need to cover the oil paper and press 3-5s to enhance the fastness.
5. This product is only can be printed by color laser printers.



# METALLIC LASER TRANSFER PAPER



Scan Or Touch To View Video



1-Paper-System for printing metallic colors onto white, black & colored mugs as well as many other uncoated hard surfaces.

Size	A4/A3
Color	Gold and Silver
Printer	Colored laser printer(low temperature)
Print mode	Label , mirror printing
Instruction	For mugs: ☞:140-180 °C ☜:180s
Applications	Used on uncoated hard surfaces,such as ceramic,glass,metal etc.



## Features:

1. Mainly used for uncoated hard surfaces objects, such as ceramic tile, glass, metal, etc.,It can complete excellent image transfer, especially on dark objects.
2. Firm pattern and good scratch resistance.
3. Excellent self-weeding effect and the intact pattern.
4. All you need is a cheap Black & White laser printer!and it is not recommended to use a normal laser photocopier, its temperature is too high.
- 5.Impress your customers with something new and unique.



# LASER UNCOATED PAPER



Scan And View Video

Application: Ceramic, glass, metal, wooden and plastic items etc.

Size	Sheet: A4/A3	Roll: 1.05*30/50m
Suitable Material	Plastic Materials/Metal/Glass/Uncoated mug, and so on	
Printer	HP laser color printer (recommended)	
Print Mode	Mirror printing mode, Label Paper	
Temperature	175°C (170-180°C)	
Time	25s (15-25s)	



## Features:

1. Laser uncoated transfer paper (smart paper) can be directly used for ceramic, metal, stone, glass, plastic and other products without coating.
2. Applicable printer: laser printer for LED imaging (low temperature)
3. Color resolution
4. Easier to strip
5. Good scratch resistance

## \*Notice:

1. Select horizontal flip (image) before printing (mirror print)
2. Regular printer selection: Photo paper print quality, please select (thick paper) or label paper
3. Transfer conditions:

Ceramic/metal/ glass: 160 degrees, 3 minutes, and cool peel

Leather: 160 degrees, 1 minute, and hot peel

Pen: 175 degrees, 25 seconds

Different products will have a little error. The best way is to test them a few times and ensure the most suitable temperature.



# ECO-SOLVENT TRANSFER PAPER

The transfer paper printed with eco-solvent ink, printed on a transfer film, and transferred to a cloth or other material under a certain temperature and pressure.

## \*COMPARING WITH PLAIN PAPER:

The material can be used in a wider range of fabrics, such as cotton, polyester and canvas, which can be processed very well. At the same time, it also has a relatively high washing fastness, which makes the pattern clearer and brighter during processing. And, when the garment is printed, the use can make the entire process easier.



	Eco-solvent dark transfer paper	Eco-solvent light transfer paper
Size	50cm/61cm/ × 50m	50cm/61cm/ × 50m
Suitable Materials	Dark colored 100% cotton or polyester cotton blend fabric	Light colored 100% cotton or polyester cotton blend fabric
Printer	Piezoelectric printer	Piezoelectric printer with Eco-solvent ink
Ink	Eco-solvent ink	Eco-solvent ink
Print Mode	Normal mode	Mirror printing
Temperature	160-180°C	180-190°C
Time	20s	25s (25-15s)
Peel type	Warm peel	Hot peel

## TRANSFER FILM



Size: 0.5/1.05×50m

The transfer film is also called thermal transfer film, and the transfer film is an intermediate carrier which is present on the transfer paper base or plastic base and carries a printed pattern for transferring a chemical elastic film on the printed material.

### Feature:

It is characterized by high tensile strength, good thermal stability, low heat shrinkage, smooth surface, and can be used repeatedly.

### Application:

Before transferring the printed pattern onto the fabric, the transfer film needs to be placed on the already printed pattern, which helps to transfer the image to the fabric.



- **Instant dry sublimation paper**
- **Size: A3/A4/8.5"x11"/11"x17"**
- **Weight: 120gsm**



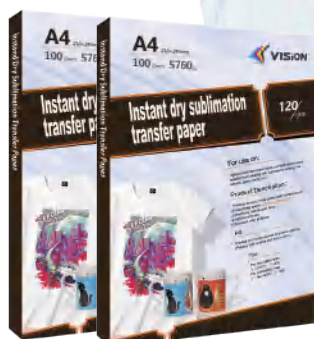
## Product Description

1. Print by desktop ink-jet printer with sublimation ink
2. Fast drying speed (*Dry time:60seconds*)
3. Effectively reduce gear trace
4. High transfer rate
5. Excellent color brilliance

## PS

Printing on smooth surface and mirror printing  
(Printing side is white and backside is with OEM back printing)

**Customize backside** >



Transfer conditions	Temperature	Time
Non-cotton fabric	210°C	40s
Sublimation mug	140°C~180°C	45s



## For Use on

Scan And View Video

Light-colored non-cotton fabric and high temperature resistant solid objects with sublimation coating, like ceramic, glass, metal etc.





# Sublimation Transfer Paper

- Fast dry sublimation paper
- Sticky sublimation paper
- Jumbo roll sublimation paper
- A4/A3 100gsm sublimation paper



- ✓ Fast drying
- ✓ High transfer rate: Over 95%
- ✓ Anti-curl
- ✓ Smooth surface
- ✓ Excellent stability
- ✓ Excellent color brilliance

# Fast Dry

Sublimation Transfer Paper



Scan And View Video

Type	GSM	Width	Length
Fast Dry	120	2.05/2.2/2.4/2.6/2.8/3.05/3.2m	100m
Fast Dry	100	0.42/0.61/0.914/1.118/1.3/1.4/1.5/1.52/1.6/1.62/1.8/1.83/2.6/3.2m	100m
Fast Dry	90	0.914/1.118/1.5/1.52/1.6/1.62m	100m
Fast Dry	80	0.61/0.914/1.118/1.3/1.4/1.5/1.52/1.6/1.62/1.7/1.83/2.6/3.2m	100m
Fast Dry	70	1.118/1.3/1.4/1.5/1.52/1.6/1.62/1.7/1.83/1.88m	200m
Fast Dry	60	1.118/1.5/1.52/1.6/1.62m	150/200m
Fast Dry	45	1.5/1.52/1.6/1.62m	200/500m
Fast Dry	40	1.32/1.5/1.52/1.6/1.62/1.72/1.83/1.88m	500/1000m

\*Transfer condition: 🔥: 210°C ⌚: 40s

## The Recommended Printers:

Brands: Epson, Mutoh, Roland, Mimaki

Epson Models: Epson 3000/4000/400HS/7600/9600/10600

## Application:

Used for white or light polyester, poly and cotton mix (50%polyester at least), ceramic, glass, nylon, metal, wood etc, this process can be used on sport apparel, bolster, curtain, banner, handbag, luggage, tile, flag and poster as they have coating and high temperature resistance.

## Advantages:

1. High transfer rate:  $\geq 95\%$
2. Anti-curl.
3. High smoothness of paper, avoid damaging the print head.

## Features:

The vivid images transferred by sublimation paper on fabrics as better as results printed directly. The images from sublimation paper immerse into the fabric materials, while good light resistance and no fade long time.



# Jumbo Roll

Sublimation transfer paper



Type	GSM	Width	Length
Fast Dry	100	0.42/0.61/0.914/1.118/1.3/1.4/1.5/1.52/1.6/1.62/1.8/1.83/2.6/3.2m	≤1.86: 6000-7000m ≥1.86: 5000-6500m
Fast Dry	90	0.914/1.118/1.5/1.52/1.6/1.62m	≤1.86: 5500-7000m ≥1.86: 5000-6500m
Fast Dry	80	0.61/0.914/1.118/1.3/1.4/1.5/1.52/1.6/1.62/1.7/1.83/2.6/3.2m	7000-8500m
Fast Dry	70	1.118/1.3/1.4/1.5/1.52/1.6/1.62/1.7/1.83/1.88m	9000-11000m
Fast Dry	60	1.118/1.5/1.52/1.6/1.62m	9000-11000m
Fast Dry	45	1.5/1.52/1.6/1.62m	14000-16000m
Fast Dry	40	1.52/1.62/1.72/1.82m	10850-11750m

\*Jumbo roll sublimation paper don't need be cut during production, and lower production cost than small rolls.



- Sticky sublimation paper
- A4 100gsm sublimation paper



## Sticky Sublimation Paper

Sticky sublimation transfer paper to solve quality challenges for applications in elastic fabrics. This paper sticks to the fabrics under heating conditions, which prevents fabric shrinking or ghosting. It also offers excellent details while printing.

Transfer condition: 🔥: 200°C ⌚: 40s

Type	GSM	Width	Length
Sticky	100	0.42/0.61/0.914/1.118/1.52/1.6/1.62/1.8m	100m

### Main Features:

1. Thermally sticks to a variety of elastic fabrics.
2. Reduces ghosting.
3. Superb transfer yield and colour gamut.
4. Enables extraordinarily detailed printing.



## A4/A3 100gsm Sublimation Paper (Fast dry/Instant dry)



Vision A4/A3 sublimation paper used for sport garments, mugs and more small size products, printed by A4/A3 inkjet printer with sublimation ink.

\*Noted:

- A) Fast Dry: Printing side is white and back is pink.
- B) Instant Dry: Printing side is smooth feeling.

### Advantages:

1. Used for small size transferred products.
2. Don't need big heat press machines and printers to work with.
3. Easy to operate and transfer into products.

### Storage Conditions:

In the condition of sealed storage, the temperature/humidity controls at ordinary temperature, 50-60%RH, and keeps out of direct sunshine.



# OBM

## SUBLITEXTILE

Scan And View Video

The OBM Sublitextile is a fabric of sublimation coating polyester. It was developed especially for light or dark polyester and cotton fabrics.

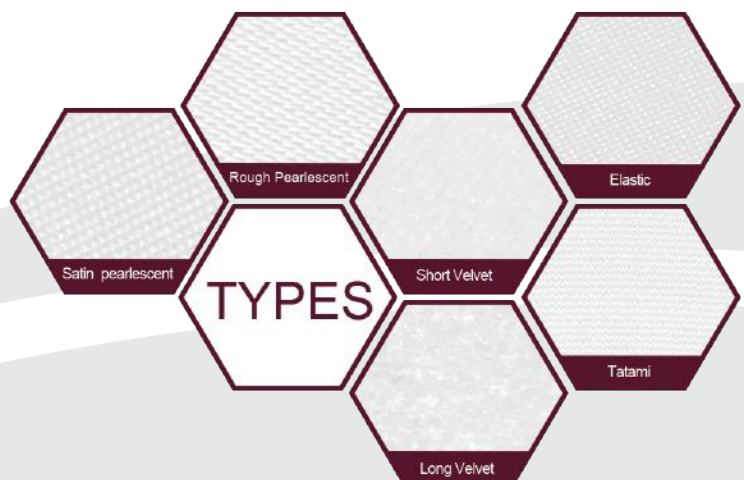
Apply	Cotton, Polyester, Polycotton
Types	Elastic, Short velvet, Long velvet, Satin pearlescent, Rough pearlescent, Tatami
Size	Sheet: A4/A3    Roll: 0.5x25m
Transfer condition	Step 1: From OBM to T-shirt    🔥: 210°C    ⌚: 5~10 s
	Step 2: Transfer printed sublimation paper to OBM    🔥: 210°C    ⌚: 40 s
Pressure	Medium pressure



Sublimation ink

### Features:

1. Resistant to washing
2. Can be used in colored cotton fabrics or white, and even in colored polyester fabrics.
3. It does not need hours for drying.
4. Does not fade with time.
5. High durability compared to other products on the market



## SUBLIMATION HTV



Scan Or Touch To View Video



### Features:

- Achieve Sublimation Transfer on Light Cotton
- Realize the pattern of hollow effect
- Compatible with most heat press machines
- Vivid & Bright Colors
- Long Lasting

### Sublimation HTV

Size	Sheet: A4 A3 12"*10" 12"*12"    Roll: 1.05×30/50m
Suitable Materials	Widely used on most material: cotton, polyester, canvas, etc.
Printer	For all inkjet printer
Transfer condition	Step 1 Press sublimation HTV on fabric 🌡️ : 185°C ⌚ : 5s (cold peel on the flat) Step 2 Press sublimation paper on sublimation HTV 🌡️ : 185°C ⌚ : 40s (cold peel)

# ABOUT US



Scan and View  
Factory Video

SHANGHAI YESION

is your Top 1 supplier for heat  
transfer vinyl.



## Our advantage:

-  High Quality Raw materials
-  Strict Quality Control
-  Stable Quality Assurance
-  Rich Product Selection

## Shanghai Yesion Industrial Co., Ltd.

Was established in 2008, specializing in the production and development of heat transfer vinyl.

The factory covers an area of 15,000 square meters, and the production capacity can reach 50,000 to 60,000 square meters per day.



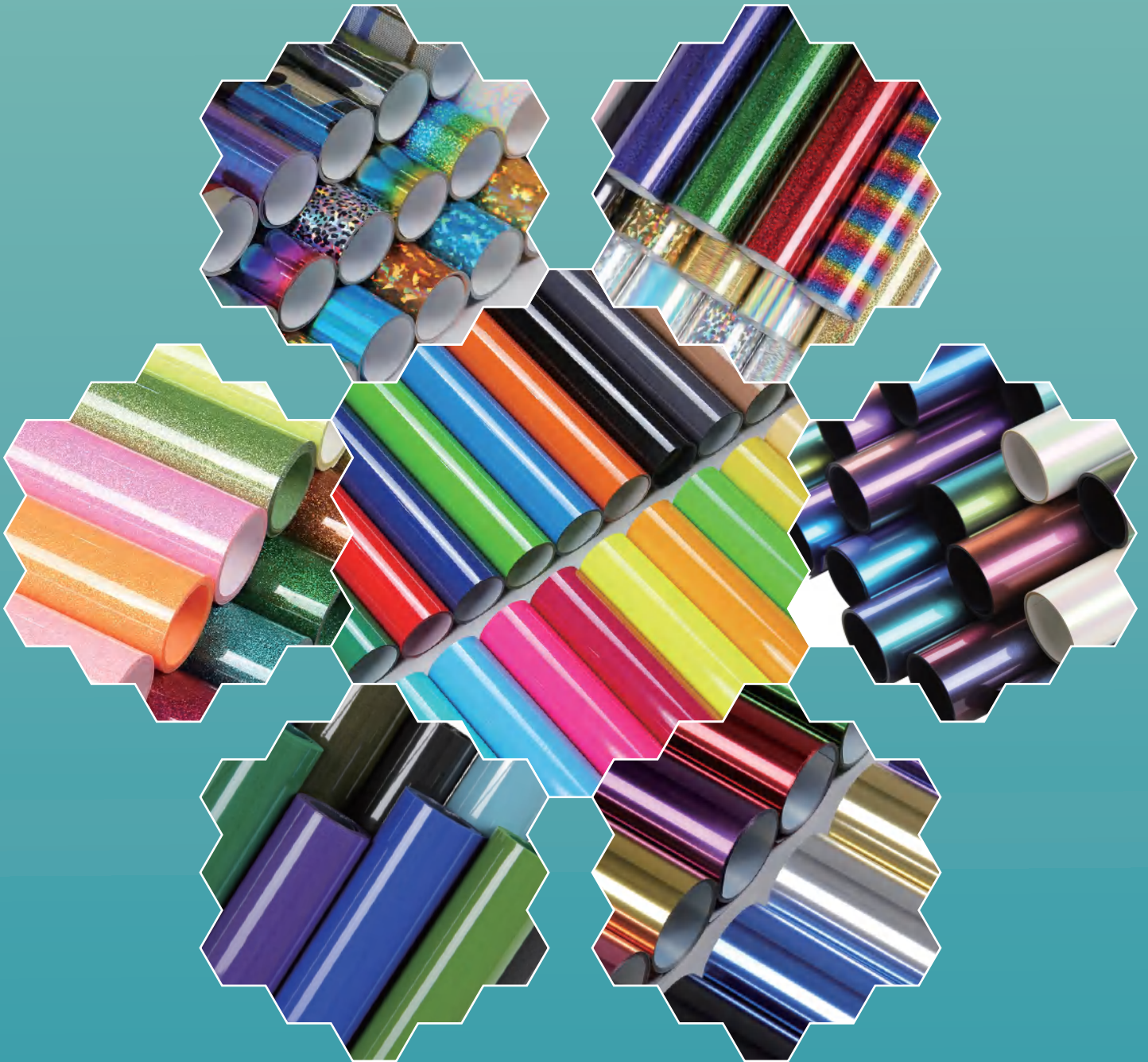
## Our heat transfer vinyl types include

PU,PVC, Patterned, Glitter,  
Flock, Holographic,Metallic,  
Glow in the dark, Reflective,  
Printable, Rainbow glitter  
Soft metallic, and 3D puff etc.

And we are still constantly researching new products.



# HEAT TRANSFER VINYL



*Heat Transfer Vinyl*

# HEAT TRANSFER VINYL SPECIFICATION

Product	Normal Size(wxl)	Package	Material Thickness	Temp	Time	Peeling
PU	24in*164ft 61cm×50m	1 roll	0.08mm	302~320°F 150~160°C	10-15s	Hot
Vent hole	24in*164ft 61cm×50m	1 roll	0.1mm	302~320°F 150~160°C	10-15s	Hot
Chameleon	24in*164ft 61cm×50m	1 roll	0.1mm	302~320°F 150~160°C	10-15s	Hot
PVC	24in*164ft 61cm×50m	1 roll	0.13-0.14mm	302~320°F 150~160°C	10-15s	Hot
Flock	19.6in*82ft 50cm×25m	1 roll	0.5-0.6mm	302~320°F 150~160°C	10-15s	Hot
Metallic	19.6in*164ft 50cm×50m	1 roll	0.1mm	302~320°F 150~160°C	10-15s	Cool
Glitter	19.6in*82ft 50cm×25m	1 roll	0.25mm	302~320°F 150~160°C	10-15s	Hot
Hologram	19.6in*164ft 50cm×50m	1 roll	0.1mm	302~320°F 150~160°C	10-15s	Cool
Reflective	24in*164ft 61cm×50m	1 roll	0.08mm	275°F 135°C	5s	Hot
PU Printable	20in/24in*164ft 51cm/61cm×50m	1 roll	0.1mm	302~320°F 150~160°C	10-15s	Hot
3D Puff	19.6in*82ft 50cm×25m	1 roll	0.16mm	311°F 155°C	20s	Hot

### APPLIES TO:

- 100% cotton
- Poly/cotton blends
- 100% polyester
- Leather

### WASHING CONDITION:

- Wait 24 hours before 1st wash
- Water temperature: 104°F~140°F (40°C~60°C)
- Machine wash warm or cold/mild detergent

### CARE INSTRUCTION:

- Turn garment inside out
- Do not bleach
- Dry on normal dryer setting
- Do not dry clean

### STORAGE INSTRUCTION:

- Store in a cool, dry area
- Keep material away from direct sunlight
- Avoid heat and humidity

# HEAT TRANSFER VINYL



Premium quality   Good customer service   Best prices



**Scan QR to get more information**